

Herramientas Industriales de Mano



Alicate Corte Diagonal - Cr V

9970124 - 140mm (5 1/2")
9970126 - 165mm (6 1/2")
9970128 - 190mm (7 1/2")



Pinza Universal - Cr V

9970314 - 152mm (6")
9970316 - 180mm (7")
9970318 - 203mm (8")
9970320 - 254mm (10")



Pinza Punta Plana - Cr V

9970620 - 152mm (6")



Pinza Punta Media Caña - Cr V

9970644 - 165mm (6 1/2")
9970646 - 203mm (8")



Pinza Punta Redonda - Cr V

9970674 - 152mm (6")



Pinza Combinación Tipo Ford - Cr V

9970358 - 203mm (8")



Tenaza Carpintero - Cr V

9972206 - 178mm (7")
9972208 - 203mm (8")



Tenaza 1/2 Corte p/Armador - Cr V

9972220 - 229mm (9")



Pinza Presión Mordaza Curva - Cr V

9970502 - 127mm (5")
9970506 - 180mm (7")
9970510 - 254mm (10")



Pinza Presión Mordaza Recta - Cr V

9970528 - 254mm (10")



Pinza Presión Mordaza Larga - Cr V

9970544 - 165mm (6 1/2")



Pinza de Presión Profesional Tipo Soldador

9970578 - 254mm (10")



Pinza de Presión Profesional Tipo Hojalatero

9970579 - 254mm (10")



Pinza para Anillos Retención (Seeger) Curva

9970726 - 178mm (7") Externa
9970730 - 250mm (10") Externa
9970756 - 178mm (7") Interna
9970760 - 250mm (10") Interna



Pinza para Anillos Retención (Seeger) Recta

9970746 - 178mm (7") Externa
9970750 - 250mm (10") Externa
9970766 - 178mm (7") Interna
9970770 - 250mm (10") Interna



Pinza Múltiple p/Anillos Retención

9970712 - 152mm (6")



Exhibidor de Pinzas, Alicates y Tenazas (77x85mm)

9962177 3 de c/u: 9970124, 9970126, 9970128, 9970314, 9970316, 9970318, 9970320, 9970620, 9970644, 9970646, 9970510, 9970726, 9970746, 9970756, 9970766, 9972206, 9972208, 9970712.



Alicate Cortapernos

9970110 - 203mm (8") - Capac: 2mm
9970112 - 300mm (12") - Capac: 4mm
9970113 - 355mm (14") - Capac: 5mm
9970115 - 450mm (18") - Capac: 6mm
9970117 - 600mm (24") - Capac: 8mm
9970119 - 760mm (30") - Capac: 10mm
9970121 - 910mm (36") - Capac: 12mm
9970123 - 1067mm (42") - Capac: 14mm



Reparac. p/Alicates Cortapernos

9970182 Para código 9970110
9970184 Para código 9970112
9970186 Para código 9970113
9970188 Para código 9970115
9970190 Para código 9970117
9970192 Para código 9970119
9970194 Para código 9970121
9970196 Para código 9970123



Exhibidor de Alicates Cortapemos (81 x 15cm)

9962179 2 de c/u: 9970110, 9970112, 9970113, 9970115, 9970117.



Mini Alicata Corte Frontal - Cr V

9970262 - 102mm (4")



Mini Alicata Corte Diagonal - Cr V

9970252 - 114mm (4 1/2")



Mini Pinza Universal - Cr V

9970274 - 114mm (4 1/2")



Mini Pinza Punta Plana - Cr V

9970290 - 127mm (5")



Mini Pinza Punta Curva - Cr V

9970284 - 127mm (5")



Mini Pinza Media Caña Recta - Cr V

9970280 - 114mm (4 1/2")



Mini Pinza Punta Redonda - Cr V

9970296 - 127mm (5")



Alicate Pela Cable - Industrial

9969802 - 170mm (7")
Cortes Ø 0,6 a 5mm

Alicate p/Entallar Terminales - Ind.



9969804 - 235mm (9")
Corta cable.
Prensa conector term: 1,5 / 2,5 / 6mm²
Term. sin aislación: 4-6 / 2,5 / 1,5mm²
Pela cable: 0,75 / 1 / 1,5 / 2,5 / 4 / 6mm²



Exhibidor de Mini Pinzas - Tijeras (85 x 76,5cm)

9962178 3 de c/u: 9937816, 9937820, 9937822, 9937824, 9937856, 9937858, 9937860, 9937886, 9970252, 9970262, 9970274, 9970280, 9970284, 9970290, 9970296, 9970502, 9970506, 9970528, 9970544, 9970730, 9970750, 9970760, 9970770



Llaves Ajustables - Cr V

9943010 - 152mm (6")
9943012 - 203mm (8")
9943014 - 254mm (10")
9943016 - 305mm (12")
9943020 - 381mm (15")
9943022 - 457mm (18")



Llaves Ajustables "Soft Grip" - Cr V

9943050 - 152mm (6")
9943052 - 203mm (8")
9943054 - 254mm (10")
9943056 - 305mm (12")



Llaves Ajustables "Max Force" - Cr V

9943030 - 152mm (6")
9943032 - 203mm (8")
9943034 - 254mm (10")
9943036 - 305mm (12")



Conjunto Repuestos para Llaves Ajustables - Cr V

9943104 - 6". Para Código 9943010
9943105 - 8". Para Código 9943012
9943106 - 10". Para Código 9943014
9943107 - 12". Para Código 9943016
9943108 - 15". Para Código 9943020
9943110 - 18". Para Código 9943022

Cada conjunto contiene 1 mordaza, 1 perno, 1 resorte y 1 sinfin



Llaves para Caños - Cr V

9943204 CR-141 - 2,54mm (1")
9943206 CR-142 - 3,81mm (1 1/2")
9943208 CR-143 - 5,08mm (2")



Pinza Pico de Loro - Cr V

9970421 - 152mm (6")
9970426 - 203mm (8")
9970428 - 254mm (10")
9970430 - 305mm (12")



Exhibidor de Llaves Ajustables (77 x 85cm)

9962176 3 de c/u: 9943010, 9943012, 9943014, 9943016, 9970426, 9970428, 9970430, 9943204, 9943206, 9943208.



Tijera Multiuso Recta - Cr V

9937886 - 203mm (8")



Tijera Corta Lata Tipo Americano Profesional Recta - Cr V

9937886 - 203mm (8")



Tijera Aviación Recta - Cr V

9937824 - 254mm (10")



Tijera Aviación Derecha - Cr V

9937820 - 254mm (10")



Tijera Aviación Izquierda - Cr V

9937822 - 254mm (10")



Tijera de Podar Recta - Cr V

9937856 - 203mm (8")



Tijera Poda Prof. - Hoja a Tope

9937858 - 203mm (8")



Tijera Poda Prof. - Hoja Pasante

9937860 - 203mm (8")

**Destornilladores Planos
Mango Acrílico - Cr V Mo (x 12 unid.)**

9940212 - 3 x 50mm
9940214 - 3 x 75mm
9940220 - 3 x 150mm
9940254 - 5 x 75mm
9940256 - 5 x 100mm
9940258 - 5 x 125mm
9940260 - 5 x 150mm
9940276 - 6 x 100mm
9940278 - 6 x 125mm
9940280 - 6 x 150mm
9940324 - 8 x 150mm
9940326 - 8 x 200mm



**Destornilladores Philips
Mango Acrílico - Cr V Mo (x 12 unid.)**

9940412 - 3 x 50mm
9940416 - 3 x 75mm
9940420 - 3 x 150mm
9940454 - 5 x 75mm
9940458 - 5 x 125mm
9940460 - 5 x 150mm
9940470 - 6 x 40mm
9940476 - 6 x 100mm
9940480 - 6 x 150mm
9940484 - 6 x 250mm



**Destornilladores Torx
Mango Acrílico - Cr V Mo (x 12 unid.)**

9940356 - T6 x 75mm
9940357 - T7 x 75mm
9940358 - T8 x 75mm
9940359 - T9 x 75mm
9940360 - T10 x 75mm
9940365 - T15 x 100mm
9940370 - T20 x 100mm
9940380 - T30 x 150mm



**Exhibidor Destornilladores
Mango Acrílico (63 x 32cm)**

9962198 1 caja de 12 x código:
9940212, 9940214, 9940220, 9940254,
9940256, 9940258, 9940260, 9940276,
9940278, 9940280, 9940324, 9940326,
9940412, 9940416, 9940420, 9940454,
9940458, 9940460, 9940470, 9940476,
9940480, 9940484.



**Destornilladores Planos
Mango Soft - Cr V Mo (x 6 unidades)**

9940634 - 4 x 75mm
9940640 - 4 x 150mm
9940654 - 5 x 75mm
9940656 - 5 x 100mm
9940658 - 5 x 125mm
9940660 - 5 x 150mm
9940676 - 6 x 100mm
9940678 - 6 x 125mm
9940680 - 6 x 150mm
9940724 - 8 x 150mm



**Destornilladores Philips
Mango Soft - Cr V Mo (x 6 unidades)**

9940836 - 4 x 100mm
9940840 - 4 x 150mm
9940854 - 5 x 75mm
9940856 - 5 x 100mm
9940858 - 5 x 125mm
9940860 - 5 x 150mm
9940870 - 6 x 400mm
9940876 - 6 x 100mm
9940880 - 6 x 150mm



**Destornilladores Torx
Mango Soft - Cr V Mo (x 6 unidades)**

9940760 - T10 x 75mm
9940765 - T15 x 75mm
9940770 - T20 x 100mm
9940775 - T25 x 125mm
9940777 - T27 x 125mm
9940780 - T30 x 125mm
9940790 - T40 x 150mm



Puntas Magnéticas Philips
 Encastre 1/4" (10 unidades de c/u)



- 9941152 - N-0 25mm
- 9941154 - N-0 50mm
- 9941156 - N-1 25mm
- 9941158 - N-1 50mm
- 9941160 - N-2 25mm
- 9941162 - N-2 50mm
- 9941164 - N-3 25mm
- 9941166 - N-3 50mm

Puntas Magnéticas Torx Tamper
 Encastre 1/4" (10 unidades de c/u)



- 9941408 - T-7 25mm
- 9941410 - T-8 25mm
- 9941412 - T-9 25mm
- 9941414 - T-10 25mm
- 9941424 - T-15 25mm
- 9941434 - T-20 25mm
- 9941444 - T-25 25mm
- 9941454 - T-30 25mm
- 9941474 - T-40 25mm



Juego de Destornilladores para Electrónica (6 dest. en caja plástica)

- 9940954 Planos: 3x10mm, 2,4x10mm, 2x10mm, 1,4x10mm
 Philips: PH # 1x10mm, PH # 0x10mm

Puntas Magnéticas con Bocallave Hexagonal - Encastre Macho 1/4"



- 9941052 - 1/4"
- 9941054 - 5/16"
- 9941056 - 3/8"

Puntas Magnéticas Planas
 Encastre 1/4" (10 unidades de c/u)



- 9941202 - 3 x 25mm
- 9941204 - 3 x 50mm
- 9941206 - 4 x 25mm
- 9941208 - 4 x 50mm
- 9941210 - 5 x 25mm
- 9941212 - 5 x 50mm
- 9941214 - 6 x 25mm
- 9941216 - 6 x 50mm



Juego de 15 Puntas Torx

- 9941386 **7 puntas cortas:** T20, T25, T30, T40, T45, T50, T55. **7 puntas largas:** T20, T25, T30, T40, T45, T50, T55.
 1 adaptador p/puntas torx 1/2".

Juego de 42 Puntas Combinadas Hexagonales, Torx, Estriadas



- 9941392 **7 puntas hexag. cortas:** H4, H5, H6, H7, H8, H10, H12. **7 puntas hexag. largas:** H4, H5, H6, H7, H8, H10, H12. **5 puntas estr. cortas:** M5, M6, M8, M10, M12. **5 puntas estr. largas:** M5, M6, M8, M10, M12. **8 puntas torx cortas:** T20, T25, T30, T40, T45, T50, T55, T60. **8 puntas torx largas:** T20, T25, T30, T40, T45, T50, T55, T60.
 1 adaptador p/puntas torx 1/2" y 3/8".

Torquímetros Profesionales de Zafe



- 9936112 Encastre 1/2" - 42-210 Nm
- 9936120 Encastre 3/4" - 78-400 Nm

Puntas Magnéticas Pozi Drive
 Encastre 1/4" (10 unidades de c/u)



- 9941252 - N-0 25mm
- 9941254 - N-0 50mm
- 9941256 - N-1 25mm
- 9941258 - N-1 50mm
- 9941260 - N-2 25mm
- 9941262 - N-2 50mm
- 9941264 - N-3 25mm
- 9941266 - N-3 50mm



Juego de Llaves Torx - Largas

- 9943580.1 9 pcs: T10, T15, T20, T25, T27, T30, T40, T45, T50.



Juego de Llaves Hexagonales Standart - Cr V Mo

Punta Esférica

- 9942946 9 pcs: 1,5; 2; 2,5; 3; 4; 5; 6; 8 y 10mm.
 9942996 9 pcs: 1/16, 5/64, 3/32, 1/8, 5/32, 3/16, 1/4, 5/16, 3/8".



Juego de Llaves Hexagonales Largas - Cr V Mo

Punta Esférica

- 9942946.1 9 pcs: 1,5; 2; 2,5; 3; 4; 5; 6; 8 y 10mm.
 9942996.1 9 pcs: 1/16, 5/64, 3/32, 1/8, 5/32, 3/16, 1/4, 5/16, 3/8".



Juego de Llaves Hexagonales Plegables - Cr V Mo

Punta Esférica

- 9942948 9 pcs: 1,5; 2; 2,5; 3; 3,5; 4; 5; 5,5 y 6mm.
 9942998 9 pcs: 5/64, 3/32, 7/64, 1/8, 9/64, 3/16, 7/32, 1/4".



Exhibidor de Llaves Hexagonales (81 x 15cm)

- 9962250 2 de c/cod: 9942946, 9942946.1, 9942996, 9942996.1, 9943580.1, 9942948, 9942998.

Llaves Hexagonales Métricas Standart - Cr V Mo

Punta Esférica

- 9942912 1,5 x 45mm (6 unid.)
 9942914 2 x 50mm (6unid.)
 9942916 2,5 x 56mm (6 unid.)
 9942918 3 x 63mm (6unid.)
 9942922 4 x 70mm (6 unid.)
 9942926 5 x 80mm (3unid.)
 9942930 6 x 90mm (3 unid.)
 9942934 8 x 100mm (2unid.)
 9942938 10 x 112mm (2unid.)



Llaves Hexagonales Métricas Largas - Cr V Mo

Punta Esférica

- 9942912.1 1,5 x 75mm (6 unid.)
 9942914.1 2 x 80mm (6unid.)
 9942916.1 2,5 x 87mm (6 unid.)
 9942918.1 3 x 96mm (6unid.)
 9942922.1 4 x 107mm (6 unid.)
 9942926.1 5 x 120mm (3unid.)
 9942930.1 6 x 136mm (3 unid.)
 9942934.1 8 x 154mm (2unid.)
 9942938.1 10 x 172mm (2unid.)



Llaves Hexagonales en Pulgadas Standart - Cr V Mo

Punta Esférica

- 9942952 1/16" x 45mm (6 unid.)
 9942954 5/64" x 50mm (6unid.)
 9942956 3/32" x 56mm (6 unid.)
 9942958 1/8" x 63mm (6unid.)
 9942962 5/32" x 70mm (6 unid.)
 9942966 3/16" x 80mm (3unid.)
 9942970 1/4" x 90mm (3 unid.)
 9942974 5/16" x 100mm (2unid.)
 9942978 3/8" x 112mm (2unid.)



Llaves Hexagonales en Pulgadas Largas - Cr V Mo

Punta Esférica

- 9942952.1 1/16" x 75mm (6 unid.)
 9942954.1 5/64" x 80mm (6unid.)
 9942956.1 3/32" x 87mm (6 unid.)
 9942958.1 1/8" x 96mm (6unid.)
 9942962.1 5/32" x 107mm (6 unid.)
 9942966.1 3/16" x 120mm (3unid.)
 9942970.1 1/4" x 136mm (3 unid.)
 9942974.1 5/16" x 154mm (2unid.)
 9942978.1 3/8" x 172mm (2unid.)



Limas Media Caña en Cuña Mango Plástico

- 9968306 150mm (6") - Fina
 9968308 200mm (8") - Fina
 9968310 250mm (10") - Fina
 9968312 300mm (12") - Fina
 9968326 150mm (6") - Media
 9968328 200mm (8") - Media
 9968330 250mm (10") - Media
 9968332 300mm (12") - Media
 9968356 150mm (6") - Bastarda
 9968358 200mm (8") - Bastarda
 9968360 250mm (10") - Bastarda
 9968362 300mm (12") - Bastarda



Limas Planas Paralelas Mango Plástico

- 9968306 150mm (6") - Fina
 9968308 200mm (8") - Fina
 9968310 250mm (10") - Fina
 9968312 300mm (12") - Fina
 9968326 150mm (6") - Media
 9968328 200mm (8") - Media
 9968330 250mm (10") - Media
 9968332 300mm (12") - Media
 9968356 150mm (6") - Bastarda
 9968358 200mm (8") - Bastarda
 9968360 250mm (10") - Bastarda
 9968362 300mm (12") - Bastarda





**Limas Redondas en Cuña
 Mango Plástico**

9968506 150mm (6") - Fina
 9968508 200mm (8") - Fina
 9968510 250mm (10") - Fina
 9968512 300mm (12") - Fina
 9968526 150mm (6") - Media
 9968528 200mm (8") - Media
 9968530 250mm (10") - Media
 9968532 300mm (12") - Media
 9968556 150mm (6") - Bastarda
 9968558 200mm (8") - Bastarda
 9968560 250mm (10") - Bastarda
 9968562 300mm (12") - Bastarda



**Escofinas Media Caña en Cuña
 Para Madera con Mango Plástico**

9968810 200mm (8") - Bastarda
 9968812 250mm (10") - Bastarda



Porta Cuchillas Retráctil "Econo"

9932812 9mm (+1 hoja)
 9932814 18mm (+1 hoja)



Porta Cuchillas Retráctil "Soft Grip"

9932814 9mm (+5 hojas)
 9932824 18mm (+5 hojas)



Hojas para Porta Cuchillas

9932892 9mm x 5 hojas
 9932894 18mm x 5 hojas



Cintas Métricas Profesionales

9932012 2mts x 16mm
 9932014 3mts x 16mm
 9932016 5mts x 19mm
 9932018 8mts x 25mm
 9932020 10mts x 25mm



Cintas Métricas "ImpactPro" Ind.

9932032 2mts x 16mm
 9932034 3mts x 16mm
 9932036 5mts x 19mm
 9932038 8mts x 25mm
 9932040 10mts x 25mm



**Cintas Métricas de Fibra de Vidrio
 Sistema Reel Cerrado**

9932062 15mts x 13mm
 9932064 20mts x 13mm
 9932068 30mts x 13mm



**Cintas Métricas de Fibra de Vidrio
 Sistema Reel Abierto**

9932080 50mts x 13mm
 9932088 100mts x 13mm



**Exhibidor de Cintas Métricas
 (39 x 65,5 x 22cm)**

9932090 4 de c/u: 9932018, 9932020.
 5 de c/u: 9932012, 9932014,
 9932016.

9932091 4 de c/u: 9932038, 9932040.
 5 de c/u: 9932032, 9932034,
 9932036.



Reglas Acero Inoxidable - Indust.

9932106 300mm x 25mm
 9932108 500mm x 27mm
 9932110 600mm x 27mm
 9932112 1000mm x 32mm



Odómetro Profesional

9932132 Odómetro de 4 dígitos.
 Parcial, mango extensible y
 estuche para transportar.



Nivel Tipo Torpedo ABS - Magnético

9936004 230mm (9")



Nivel Aluminio "3 gotas" - Base fresada

9936008 300mm (12")
 9936012 400mm (16")
 9936018 600mm (24")



Escuadra Aluminio Profesional

9932156 300mm (12")
 9932158 355mm (14")



Escuadra Combinación 12"

9932186 300mm (12")



Remachadora Manual

9971004 241,3mm (9 1/2")
Boquillas: 2,4; 3,2; 4 y 4,8mm.



Remachadora Manual Reforzada

9971014 260mm (10,5")
Boquillas: 2,4; 3,2; 4 y 4,8mm.



Arco para Sierra Mini

9940055 220mm (9")



Arco para Sierra Junior

9940052 152mm (6")



Arco para Sierra Profesional "Soft Grip" - Corte 55°/90°

9940058 305mm (12")



Arco para Sierra Mecánico Corte 55°/90°

9940056 305mm (12")



Arco para Sierra Ergonómico "Perfil Bajo" - Corte 55°/90°

9940066 305mm (12")



Serrucho de Costilla "Hard Cut" Mango Pástico

9971844 305mm (12")



Serruchos Profes. "Hard Cut" Mango Plástico

9971824 406mm (16")
9971828 508mm (20")
9971830 559mm (22")
9971832 610mm (24")



Serruchos Profes. "Max Cut" Mango Madera

9971808 508mm (20")
9971810 559mm (22")



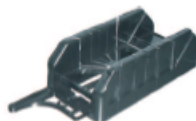
Serruchos para Poda Curvo "Hard Cut" Mango Plástico

9971872 305mm (12")



Formones - Mango Plástico

9941506 6mm	9941520 20mm
9941508 8mm	9941522 22mm
9941510 10mm	9941525 25mm
9941512 12mm	9941528 28mm
9941516 16mm	9941530 30mm
9941519 19mm	



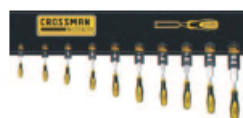
Caja para Ingletes - ABS

9971862 Cortes a 45° - 22-1/2° - 90°



Prensas Tipo "G" Forjadas Profes.

9937102 51mm (2")
9937103 76mm (3")
9937104 102mm (4")
9937105 127mm (5")
9937106 152mm (6")
9937108 203mm (8")



Exhibidor de Formones (81 x 15cm)

9962270 3 de c/u: 9941508, 9941510, 9941512, 9941516, 9941519, 9941520, 9941522, 9941525, 9941528, 9941530.



Prensas Tipo "G" Hierro Fundido

9937142 51mm (2")
9937143 76mm (3")
9937144 102mm (4")
9937145 127mm (5")
9937146 152mm (6")
9937148 203mm (8")



Prensas de Gatillo Tipo "F" de Liberación Rápida

Reversible, convertible en expansor

9937156 152mm (6")
9937160 305mm (12")
9937162 457mm (18")
9937164 610mm (24")
9937166 762mm (30")
9937168 914mm (36")



Engrapadora Profes. Grapas Rectas

9932210 Grapas rectas: 4 a 8mm x 11,3mm



Engrapadora Industrial Grapas Rectas y Curvas

9932214 Grapas rectas: 6 a 14mm x 10,6mm
Grapas rectas: 10 a 14mm x 7,7mm

Grapas Rectas



9932310 6mm x 11,3mm - 1000unid. (p/9932210)
9932314 8mm x 11,3mm - 1000unid. (p/9932210)
9932330 6mm x 10,6mm - 500unid. (p/9932214)
9932332 8mm x 10,6mm - 500unid. (p/9932214)
9932334 10mm x 10,6mm - 500unid. (p/9932214)
9932336 12mm x 10,6mm - 500unid. (p/9932214)
9932338 14mm x 10,6mm - 500unid. (p/9932214)



Grapas Curvas

9932350 10mm x 7,7mm - 500unid. (p/9932214)
9932352 12mm x 7,7mm - 500unid. (p/9932214)
9932354 14mm x 7,7mm - 500unid. (p/9932214)



Línea Entizada Prof. con Tiza Azul

9932792 30mts + 115grs de tiza azul



Repuesto Tiza Azul en Polvo

9932796 115grs de tiza azul

Llaves Combinadas Acodadas (mm) - Cr V



9960102	5mm	L: 85mm	9960120	14mm	L: 190mm	9960138	23mm	L: 290mm
9960103	5,5mm	L: 89mm	9960122	15mm	L: 190mm	9960140	24mm	L: 303mm
9960104	6mm	L: 92mm	9960124	16mm	L: 202mm	9960142	25mm	L: 330mm
9960106	7mm	L: 96mm	9960126	17mm	L: 216mm	9960144	26mm	L: 330mm
9960108	8mm	L: 102mm	9960128	18mm	L: 226mm	9960146	27mm	L: 345mm
9960110	9mm	L: 114mm	9960130	19mm	L: 248mm	9960148	28mm	L: 360mm
9960112	10mm	L: 126mm	9960132	20mm	L: 254mm	9960150	29mm	L: 360mm
9960114	11mm	L: 140mm	9960134	21mm	L: 266mm	9960152	30mm	L: 382mm
9960116	12mm	L: 153mm	9960136	22mm	L: 278mm	9960154	32mm	L: 410mm
9960118	13mm	L: 165mm						

Llaves Combinadas Acodadas (pulgadas) - Cr V



9962102	7/32"	L: 89mm	9962116	9/16"	L: 190mm	9962130	15/16"	L: 303mm
9962104	1/4"	L: 92mm	9962118	5/8"	L: 202mm	9962132	1"	L: 330mm
9962106	5/16"	L: 102mm	9962120	11/16"	L: 216mm	9962134	1 1/16"	L: 345mm
9962108	11/32"	L: 114mm	9962122	3/4"	L: 248mm	9962136	1 1/8"	L: 360mm
9962110	3/8"	L: 128mm	9962124	25/32"	L: 254mm	9962138	1 13/16"	L: 382mm
9962112	7/16"	L: 140mm	9962126	13/16"	L: 266mm	9962140	1 1/4"	L: 410mm
9962114	1/2"	L: 165mm	9962128	7/8"	L: 278mm			

Llaves Fijas (mm) - Cr V



9951104.1	6 x 7mm	L: 122mm	9951112.1	12 x 13mm	L: 170mm	9951118.1	18 x 19mm	L: 220mm
9951106.1	8 x 9mm	L: 140mm	9951114.1	14 x 15mm	L: 188mm	9951120.1	20 x 22mm	L: 235mm
9951110.1	10 x 11mm	L: 158mm	9951116.1	16 x 17mm	L: 205mm	9951124.1	24 x 27mm	L: 265mm

Llaves Fijas (mm) - Cr V



9951104.1	6 x 7mm	L: 122mm	9951112.1	12 x 13mm	L: 170mm	9951118.1	18 x 19mm	L: 220mm
9951106.1	8 x 9mm	L: 140mm	9951114.1	14 x 15mm	L: 188mm	9951120.1	20 x 22mm	L: 235mm
9951110.1	10 x 11mm	L: 158mm	9951116.1	16 x 17mm	L: 205mm	9951124.1	24 x 27mm	L: 265mm

Llaves Fijas (pulgadas) - Cr V



9952104.1	1/4" x 5/16"	L: 122mm	9952112.1	1/2" x 9/16"	L: 188mm	9952120.1	3/4" x 7/8"	L: 220mm
9952108.1	3/8" x 7/16"	L: 158mm	9952116.1	5/8" x 11/16"	L: 205mm	9952122.1	15/16" x 1"	L: 265mm

Llaves Estriadas Acodadas (mm) - Cr V



9963006	6 x 7mm	L: 165mm	9963012	12 x 13mm	L: 210mm	9963022	18 x 19mm	L: 260mm
9963008	8 x 9mm	L: 180mm	9963014	14 x 15mm	L: 227mm	9963026	20 x 22mm	L: 280mm
9963010	10 x 11mm	L: 196mm	9963018	16 x 17mm	L: 241mm	9963030	24 x 27mm	L: 324mm

Llaves Estriadas Acodadas (pulgadas) - Cr V



9963106	1/4" x 5/16"	L: 165mm	9963112	1/2" x 9/16"	L: 227mm	9963122	3/4" x 7/8"	L: 260mm
9963110	3/8" x 7/16"	L: 196mm	9963118	5/8" x 11/16"	L: 241mm	9963128	15/16" x 1"	L: 324mm

Llaves Estriadas Acodadas (pulgadas) - Cr V



9963106	1/4" x 5/16"	L: 165mm	9963112	1/2" x 9/16"	L: 227mm	9963122	3/4" x 7/8"	L: 260mm
9963110	3/8" x 7/16"	L: 196mm	9963118	5/8" x 11/16"	L: 241mm	9963128	15/16" x 1"	L: 324mm

Llaves Combinadas Acodadas (mm) - Cr V



9953104	6mm	L: 128mm	9953122	15mm	L: 205mm	9953140	24mm	L: 314mm	9953157	35mm
9953106	7mm	L: 138mm	9953124	16mm	L: 225mm	9953142	25mm	L: 337mm	9953158	36mm
9953108	8mm	L: 148mm	9953126	17mm	L: 239mm	9953144	26mm	L: 359mm	9953160	38mm
9953110	9mm	L: 154mm	9953128	18mm	L: 278mm	9953146	27mm	L: 391mm	9953163	41mm
9953112	10mm	L: 162mm	9953130	19mm	L: 248mm	9953148	28mm	L: 391mm	9953164	42mm
9953114	11mm	L: 167mm	9953132	20mm	L: 270mm	9953150	29mm	L: 391mm	9953168	46mm
9953116	12mm	L: 174mm	9953134	21mm	L: 270mm	9953152	30mm	L: 425mm	9953170	48mm
9953118	13mm	L: 178mm	9953136	22mm	L: 292mm	9953154	32mm		9953172	50mm
9953120	14mm	L: 190mm	9953138	23mm	L: 314mm	9953155	33mm			

Llaves Combinadas Desplazadas (pulgadas) - Cr V



9954104	1/4"	9954114	9/16"	9954124	7/8"	9954134	1 1/4"	9954139	1 5/8"
9954106	5/16"	9954116	5/8"	9954126	15/16"	9954135	1 5/16"	9954140	1 11/16"
9954108	3/8"	9954118	11/16"	9954128	1"	9954136	1 3/8"	9954141	1 13/16"
9954110	7/16"	9954120	3/4"	9954130	1 1/16"	9954137	1 7/16"	9954142	1 7/8"
9954112	1/2"	9954122	13/16"	9954132	1 1/8"	9954138	1 1/2"	9954143	2"

Llaves Hexagonales de Boca Abierta "Tipo Corona" - Cr V



9966448	8mm x 10mm
9966450	10mm x 12mm
9966455	15mm x 17mm
9966475	3/8" x 7/16"

Llaves Doble Torx



9966406	E6 x E8
9966410	E10 x E12
9966414	E14 x E18
9966420	E20 x E24

Llaves Combinadas con Crique (mm) - Cr V



9966706	8mm	9966714	12mm	9966722	16mm	9966730	20mm	9966736	23mm
9966708	9mm	9966716	13mm	9966724	17mm	9966732	21mm	9966788	24mm
9966710	10mm	9966718	14mm	9966726	18mm	9966734	22mm	9966740	25mm
9966712	11mm	9966720	15mm	9966728	19mm				